



Salmon-Challis N.F. Incident Organizer

Incident Name	
Incident Number	
Fire Code	
Unit	

IC Time & Date	
----------------	--

Containment Date & Time	
Control Date & Time	
Final Size	

All Perimeters greater than 10 acres need to be mapped digitally and shared with Zone Duty Officer or Central Idaho Dispatch.

Directions and Intent:

MOST INCIDENTS ONLY REQUIRE FILLING OUT THE FIRST FEW PAGES - i.e., TYPE 4 AND 5 INCIDENTS. (In these situations, fill out afterwards when doing your AAR.) Use until an Incident is out or operating on an IAP.

FAST FIVE SIZE UP	
IC Type:	Name:
Lat:	Long:
Estimated Fire Size:	
Spread Potential: LOW MED HIGH EXTREME	
Fire Behavior:	
Values at Risk:	
Proximity:	
Additional Resources Needed:	

IC Signature: _____ Date: _____

Initial Attack Fire Size-Up										
Fire Name:				Fire Number		DOI:				
IC Name:						USDA:				
						State:				
Descriptive Location:										
Arrival Date:					Time:					
Legal:		Township		Range			Section(s)			
Coordinates:		Latitude				Longitude				
		UTM:		E:		N:				
Reported by:										
Estimated Size:					acres		Ownership:			
Estimated Containment			Date:			Time:				
Estimated Control			Date:			Time:				
Fire Investigator? <input type="checkbox"/> No <input type="checkbox"/> Yes, on order						Name:				
Resources Responding (use resource summary on next page to record this data):										
Initial Fire Size-Up										
Are any structures threatened? <input type="checkbox"/> No <input type="checkbox"/> Yes - specify:										
Does the fire constitute any control problems? <input type="checkbox"/> No <input type="checkbox"/> Yes - specify:										
Are additional resources needed? <input type="checkbox"/> No <input type="checkbox"/> Yes - specify:										
Hazard(s):										
Spread Potential:	1. Low		2. Moderate		3. High		4. Extreme			
Character of Fire:	1. Smoldering		3. Running		5. Torching		7. Crown/spotting			
	2. Creeping		4. Spotting		6. Crowning		8. Erratic			
Slope at Head of Fire:	1. 0-25%		2. 26-40%		3. 41-55%		4. 56-75%		5. 76-100% 6. 100% +	
Position on Slope:	1. Ridgetop			4. Middle 1/3 of slope			7. Valley bottom			
	2. Saddle			5. Lower 1/3 of slope			8. Mesa/Plateau			
	3. Upper 1/3 of slope			6. Canyon bottom			9. Flat or rolling			
Fuel Type:	1. Grass		4. Pinon/Juniper			7. Aspen				
	2. Grass/brush		5. Lodgepole/pine			8. Logging/Thinning Slash				
	3. Oakbrush		6. Spruce/fir			9. Other (specify)				
Windspeed: mph Elevation: Aspect:										
Wind Direction	1. Calm		3. NE		5. SE		7. SW		9. NW	
	2. North		4. East		6. South		8. West		10. Erratic	
Today's ERC or BI of Unit, record here:										

Resource Summary

[illegible]

DOCUMENT BRIEFING FOR ALL INCOMING RESOURCES (USE PAGE 1 OF THE I.R.P.G)

Incident Objectives

1. **SAFETY** of firefighters and public.

2.

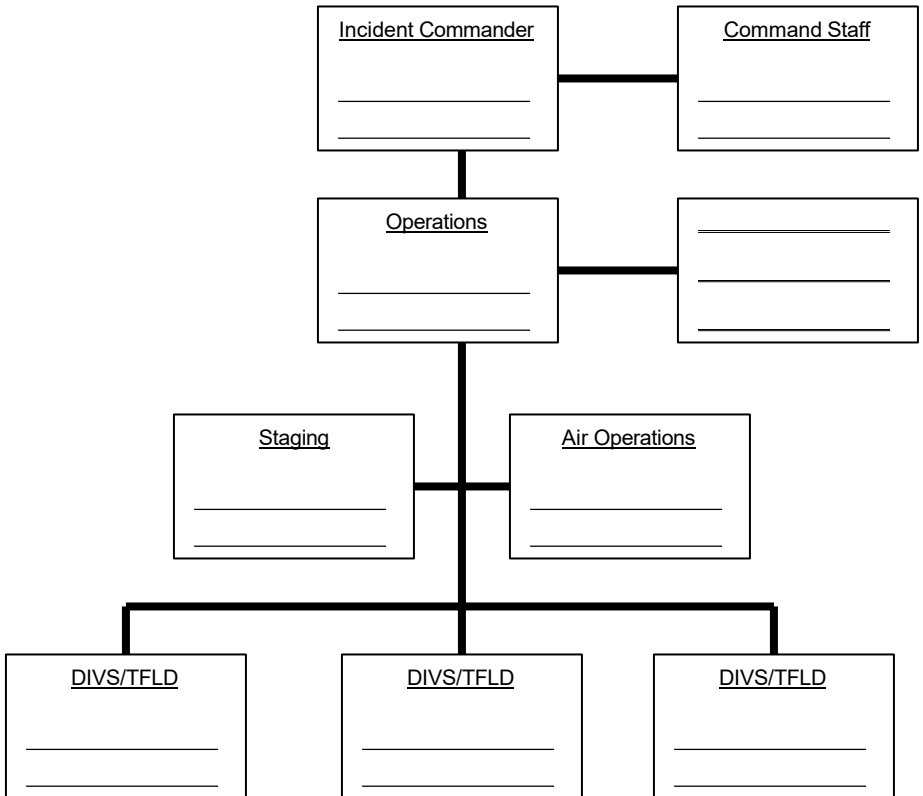
3.

4.

Your goal is to manage the incident and not create another.

(Examples: protect structures, keep fire to east of road, river or ridge)

INCIDENT ORGANIZATION



Wildland Fire Risk and Complexity Assessment

Part A: Firefighter Safety Assessment

Evaluate the following items, mitigate as necessary, and note any concerns, mitigations, or other information.

Evaluate these items	Concerns, mitigations, notes
LCES	
Fire Orders and Watch Out Situations	
Multiple operational periods have occurred without achieving initial objectives	
Incident personnel are overextended mentally and/or physically and are affected by cumulative fatigue.	
Communication is ineffective with tactical resources and/or dispatch.	
Operations are at the limit of span of control.	
Aviation operations are complex and/or aviation oversight is lacking.	
Logistical support for the incident is inadequate or difficult.	

Wilderness Initial Attack Fire Size Up

(Detection and/or IC to Dispatch for Wilderness Fires)

Proximity to:

- Boundaries
- Admin Sites
- Private Lands
- Old Burns/Barriers

Potential to Escape

Wilderness:

- Low
- Moderate
- High
- Unknown

Fuel Continuity:

- Open
- Broken
- Continuous
- Dense

Primitive Suppression Needs:

- Gravity Sock
- Additional Crosscut Saw
- C Class Crosscut Faller
- Additional Firefighters # _____
- Additional Food or Water Supplies
- Other _____

Mechanized Suppression

Needs:

- Chainsaw
 - Pump
 - Bucket/Blivet
 - Airtanker
 - Additional Helicopter
- Items approved: _____

Mechanized

Operations:

Approved
By: _____

Demob Options:

- Trail
- Packstock/Walk
- Jet Boat
- Airstrip
- Helispot

Trail Conditions:

- Poor
- Good
- Excellent
- Trail# _____

Distance to Trail:

- 0-1 Mile
- 1-3 Miles
- > 3 Miles

Stream Crossings:

- 0-1
- 2-4
- > 4

Demob Travel Time:

- 1-3 Hours
- 3-6 Hours
- > 6 Hours

Gear Weight:

- 30-50 Lbs
- 50-100 Lbs
- > 100 Lbs

Firefighter Condition:

- Good (needs day off after I.A.)
- Very Good (day off prior to I.A.)
- Unknown

Weather Outlook:

- Poor (Inclement Weather Likely)
- Good (Expected to remain Favorable)
- Excellent (High Pressure Dominating)
- Unknown

Recommended Demob Based On FF Condition, Weather, Distance, Terrain, and Travel Times

1. Pack stock/Walk (Relay Gear Pick Up Point and Travel Time to Dispatch)
2. Trail (Relay Trail Information and Estimated Travel Time to Dispatch)
3. Jet Boat (Relay Travel Time to Pick Up Point to Dispatch)
4. Aerial (Relay Helispot or Airstrip Location to Dispatch)

Recommended Demob: _____

Approved Demob: _____ Approved By: _____ Date: _____
Time: _____

Today's Burning Index: _____

WILDERNESS INTRUSION TRACKING:

Motorized/mechanized

Intrusion Approval: _____ Date: _____ Time: _____

Authorized Mechanized Use	Suppression	Support	Demob	Dates of Use	Number of Uses	Hours of Use
Smokejumper from Aircraft						
Rappeller from Helicopter						
Helicopter Landing						
Helispot Development						
Helicopter Longline						
Helicopter Buckets						
Para-cargo						
Airtankers						
Chain Saws						
Pumps						
Generators						

Relative Risk Assessment

Values	Notes/Mitigation		
<u>B1. Infrastructure/Natural/Cultural Concerns</u> Based on the number and kinds of values to be protected, and the difficulty to protect them, rank this element low, moderate, or high. Considerations: key resources potentially affected by the fire such as urban interface, structures, critical municipal watershed, commercial timber, developments, recreational facilities, power/pipelines, communication sites, highways, potential for evacuation, unique natural resources, designated areas (i.e. wilderness), T&E species habitat, and cultural sites.	L	M	H
<u>B2. Proximity and Threat of Fire to Values</u> Evaluate the potential threat to values based on their proximity to the fire, and rank this element low, moderate, or high.	L	M	H
<u>B3.Social/Economic Concerns</u> Evaluate the potential impacts of the fire to social and/or economic concerns, and rank this element low, moderate, or high. Considerations: impacts to social or economic concerns of an individual, business, community or other stakeholder; degree of support for the wildland fire program and resulting fire effects; other fire management jurisdictions; tribal subsistence or gathering of natural resources; air quality regulatory requirements; public tolerance of smoke, including health impacts; potential for evacuation and ingress/egress routes; and restrictions and/or closures in effect or being considered.	L	M	H

Hazards	Notes/Mitigation		
<u>B4. Fuel Conditions</u> Consider fuel conditions ahead of the fire and rank this element low, moderate, or high. Evaluate fuel conditions that exhibit high ROS and intensity for your area, such as those caused by invasive species or insect/disease outbreaks; and/or continuity of fuels.	L	M	H
<u>B5. Fire Behavior</u> Evaluate the current and expected fire behavior and rank this element low, moderate, or high. Considerations: intensity; rates of spread; crowning; profuse or long-range spotting.	L	M	H
<u>B6. Potential Fire Growth</u> Evaluate the potential fire growth, and rank this element low, moderate, or high. Considerations: Considerations would include current and expected fire growth based on fire behavior analysis and the weather forecast and/or the ability to control the fire.	L	M	H

Probability	Notes/Mitigation		
<u>B7. Time of Season</u> Evaluate the potential for a long-duration fire and rank this element low, moderate, or high. Considerations: time remaining until a season ending event.	L	M	H
<u>B8. Barriers to Fire Spread</u> Evaluate the barriers to fire spread and their potential to limit fire growth, and rank this element low, moderate, or high. Considerations: If many natural and/or human-made barriers are present, rank this element low. If some barriers are present, rank this element moderate. If no barriers are present, rank this element high.	L	M	H
<u>B9. Seasonal Severity</u> Evaluate fire danger indices and rank this element low/moderate, high, or very high/extreme. Considerations: Fire danger indices such as energy release component (ERC); drought status; live and dead fuel moistures; fire danger indices; adjective fire danger rating; geographic area preparedness level.	L / M	H	VH / E
Enter the number of items circled for each column.			

Relative Risk Rating (circle one):

Low	Majority of items are "Low", with a few items rated as "Moderate" and/or "High".
Moderate	Majority of items are "Moderate", with a few items rated as "Low" and/or "High".
High	Majority of items are "High"; A few items may be rated as "Low" or "Moderate".

FIRE UPDATE REPORT		
Date:	Time:	Size (acres)
Active perimeter (%)	Containment (%)	
Current Fire Behavior (actively burning, flame lengths, smoldering, creeping, etc.)	Fuel Types (Fuel Models, grass, brush, timber, duff, large/small diameter logs, etc.)	
Plans for the current and next operational period	Resources currently on scene	
	Resource needs for the current and next operational period	
Logistical needs for the current and next operational period	Specific concerns (administrative, risk management, etc.)	

FIRE UPDATE REPORT		
Date:	Time:	Size (acres)
Active perimeter (%)	Containment (%)	
Current Fire Behavior (actively burning, flame lengths, smoldering, creeping, etc.)	Fuel Types (Fuel Models, grass, brush, timber, duff, large/small diameter logs, etc.)	
Plans for the current and next operational period	Resources currently on scene	
	Resource needs for the current and next operational period	
Logistical needs for the current and next operational period	Specific concerns (administrative, risk management, etc.)	

Spot Weather Observation and Forecast Request

1. Name of Incident or Project				2. Control Agency:				3. Request Made			
								Date:		Time:	
4. Location: (Township, Range, Section)					5. Drainage Name:				6. Exposure / Aspect		
7. Size of Incident or Project (acres):					8. Elevation			9. Fuel Type:		10. Project On:	
					Top	Bottom				Ground Crowning	
11. Weather Conditions at Incident or Project or from RAWs:											
Place	Elev.	Observation Date/Time	Wind Direction/ Velocity		Temperature		RH		DP	Sky Condition	
			20 ft	Eye-level	Dry bulb	Wet bulb					
The Weather Forecaster will furnish the information for block 13							Date/Time:				
13. Discussion and Outlook:											

Work Rest Ratio Documentation Worksheet

This worksheet is designed to help the IC document and calculate amount of rest required to meet the Work/Rest guidelines.

- For every 2 hours of work or travel provide 1 hour of sleep or rest.
- IC must justify and document work shifts exceeding 16 hours and those that do not meet the 2:1 work/rest guidelines -- see below.

Date	Operational Period Start Time	Operational Period Stop Time	Total Hours Worked	Rest Time (document hours when employee or module rested)
Approval for shift lengths exceeding 16 hrs given by:			Date/ Time Approval Given:	
IC Signature:			Date:	

OPERATIONS SUPPLY ORDER

Fire Name: _____

Order # _____ Order Date _____ Order Time _____ Ordered By _____ Received By _____ Deliver Date _____ Deliver Time _____ Location _____ N ° _____ ' _____ W ° _____ ' _____ T _____ R _____ S _____	Order # _____ Order Date _____ Order Time _____ Ordered By _____ Received By _____ Deliver Date _____ Deliver Time _____ Location _____ N ° _____ ' _____ W ° _____ ' _____ T _____ R _____ S _____	Order # _____ Order Date _____ Order Time _____ Ordered By _____ Received By _____ Deliver Date _____ Deliver Time _____ Location _____ N ° _____ ' _____ W ° _____ ' _____ T _____ R _____ S _____	Order # _____ Order Date _____ Order Time _____ Ordered By _____ Received By _____ Deliver Date _____ Deliver Time _____ Location _____ N ° _____ ' _____ W ° _____ ' _____ T _____ R _____ S _____
--	--	--	--

Order Numbers							
Camp/ Spike Items		NFES	UI	Qty.	Qty.	Qty.	Qty.
1	Meal, cold breakfast or hot breakfast (per individual)	Local	#				
Special Needs:							
2	Meal, sack lunches (per individual)	Local	#				
Special Needs:							
3	Meal, hot dinner (per individual)	Local	#				
Special Needs:							
4	MRE's (12 per box)	001842	BX				
5	Fruit (how many/kind)	Local	#				
6	Gatorade	Local	CS				
7	Bottled water	Local	CS				
8	Cubees (w/drinking water) (5 gallons)(20/BX)	000048	EA				
9	Coffee (4 gallons)	Local	Gal				
10	Ice (BLOCK CRUSHED)	Local	#				
11	Cup, paper, coffee	000465	EA				
12	Mess gear, 25 person, 1 day	000135	KT				
13	Table, Folding,	002698	EA				
14	Chair, Folding, Metal	002047	EA				
15	Wash basin (1 basin for 5 people)	000027	EA				
16	Soap	Local	EA				
17	Washcloth, waterless (bath in a bag)(255/BX)	000206	EA				
18	Bath Towels	001038	BX				
19	Toilet Paper	Local	RO				
20	Port – A – Toilets (1 toilet for 8 people, service daily)	Local	EA				
21	Sleeping bag, Green Mummy	000022	EA				
22	Sleeping bag, Blue Disposable	001062	EA				
23	Pad, sleeping, gray	001566	EA				
24	Tent, 2 person	000077	EA				
25	Fly, Plastic, Tent, 16'x 24', w/10 guy ropes	000070	EA				
26	Fly, Sunscreen, 20' x 20', w/guy ropes	006131	EA				
27	Pole, ridge, 16'	000089	EA				
28	Pole, upright, adjustable	000083	EA				
29	Stakes, tent, metal	000825	EA				

OPERATIONS SUPPLY ORDER

30	Sheeting, plastic, clear 16'x100'	000143	RO				
31	Sheeting, plastic, black, 20' x 100'	000144	RO				
32	Batteries, AA (order by package) (24 in package)	000030	PG				
33	Cord, nylon shroud (parachute)	Local	FT				
34	Ribbon, flagging, Chartreuse	002396	RO				
35	Ribbon, flagging, Dark Pink	002401	RO				
36	Ribbon, flagging, Orange	002398	RO				
37	Ribbon, flagging, Killer Tree	006066	RO				
38	Ribbon, flagging, Spot Fire	006067	RO				
39	Ribbon, flagging, Escape Route	000566	RO				
40	Ribbon, flagging, Yellow/Black Hazard	000267	RO				
41	Pin, Panel, Hold Down, 8"	000538	EA				
42	Tape, filament, 1" x 60 yd	000222	RO				
43	Lightstick, chemical, Green	003009	BX				
44	Lightstick, chemical, Red	003007	BX				
45	Lip Balm, individual	001087	TU				
46	Moleskin, 3 – 3/8" x 7"	001134	PG				
47	Foot Powder, 1 ½ oz can	001117	CN				
48	Garbage bags, 30 gallon	000021	BX				
49	Dumpster, Garbage (30 yard or 60 yard)	Local	EA				
50	Fuel Truck, Gas/Diesel, 1000 gal. (staying on fire or fill and leave)	Local	EA				
Tactical Support Items		NFES	UI				
51	Pump Kit, portable fire, Mark III (order fuel separately)	0003870 0000148	KT				
52	Pump Kit, lightweight, 25 – 45 GPM (order fuel separately)	000670	KT				
53	Kit, Sprinkler	001048	KT				
54	Hose, cotton-synthetic, 1 ½" (100' length)	001239	LG				
55	Hose, cotton-synthetic, 1" (100' length)	001238	LG				
56	Hose, suction (draft hose) **Specify Size**	***	EA				
57	Hose, garden, synthetic ¾" (50' length)	001016	LG				
58	Valve, gated wye, 1 ½"	000231	EA				
59	Valve, gated wye, 1"	000259	EA				
60	Valve, wye, shut off, ¾"	000272	EA				
61	Valve, shut off, ¾"	000738	EA				
62	Valve, foot, 1½"	000212	EA				
63	Valve, foot, 2"	000906	EA				
64	Nozzle, 1 ½", plastic	000137	EA				
65	Nozzle, 1", plastic	000138	EA				
66	Nozzle, twin tip, combination (forester)	000024	EA				
67	Nozzle, garden hose, ¾ ", brass	000136	EA				
68	Reducer, 1 ½" to 1"	000010	EA				
69	Reducer, 1" to ¾"	000733	EA				
70	Coupling, double female 1 ½"	000857	EA				
71	Coupling, double female 1"	000710	EA				

OPERATIONS SUPPLY ORDER

72	Coupling, double male 1 ½"	000856	EA				
73	Coupling, double male 1"	000916	EA				
74	Clamp, hose	000046	EA				
75	Backpack pump (Piss-Pump)	001149	EA				
76	Shovel	000171	EA				
77	Pulaski	000146	EA				
78	McLeod	000296	EA				
79	Combination tool	001180	EA				
80	Fusee, signal device (72 per box)	000105	BX				
81	Drip torch	000241	EA				
82	Earplugs, foam (pair) (200 per box)	001027	PG				
83	Glove, leather, XS	001293	PR				
84	Glove, leather, S	001294	PR				
85	Glove, leather, M	001295	PR				
86	Glove, leather, L	001296	PR				
87	Glove, leather, XL	001297	PR				
88	Headlamp	000718	EA				
89	Chain Saw Kit (order fuel separately)	000340	KT				
90	Chaps, 32	000045	PR				
91	Chaps, 36	000078	PR				
92	Chaps, 40	000150	PR				
93	Bar, chainsaw (specify size, brand, driver number)	***	EA				
94	Chain, chainsaw (specify size, 84 driver for our saws)	***	EA				
95	Wedge, felling, 6"	000515	EA				
96	Wedge, felling, 8", Rifled	000516	EA				
97	Wedge, felling, 12"	002725	EA				
98	File, mill, 8", bastard	000351	EA				
99	File, mill, 10", bastard	000060	EA				
100	File, mill, 12", bastard	001059	EA				
101	File, round, 7/32", chain saw	000345	EA				
102	Tank, collapsible, 1800 GL	000668	EA				
103	Tank, collapsible, 6000 GL	006031	EA				
104	Tank, folding, 1500 GL w/frame	000664	EA				
105	Blivet, slingable (72 gallons) Non-potable	000426	EA				
106	Foam, Class A (5 gallons per pail)	001145	PL				
107	Oil, Bar, Chainsaw	001869	Qt.				
108	Oil, SAE 30 weight	000651	Qt.				
109	Oil, 2 cycle, pump	000341	Qt.				
110	Oil, 2 cycle, chainsaw (50:1)	003444	EA				
111	Fuel container, 5 gallon (With GAS) (No Pre-Mix)	Local	EA				
112	Fuel container, 5 gallon (With DIESEL) (No Pre-Mix)	Local	EA				
113	Fuel container, Safety (NO FUEL)	000606	EA				
114	Fuel container, 5 gallon (NO FUEL)	000606	EA				
115	Cloth, Oil Sorbent, 36"x 36"x 3/8"	000251	EA				
116	Berm, containment (to lay pump on near water source)	000693	EA				

OPERATIONS SUPPLY ORDER

	When ordering non-standard items remember to specify make, size, color, etc. Be specific with saw items.						
117	Initial Basecamp Order (1 Crew or 3-4 Engines / Day) (20 People)						
	MRE's (12 per box)	001842	BX	6			
	Gatorade, NO ICE	Local	CS	5			
	Bottled water, NO ICE	Local	CS	5			
	Cubees (with drinking water) (5 gallons)	Local	EA	10			
	Batteries, AA (order by package) (24 in package)	000030	PG	10			
	Foam, Class A (5 gallons per pail)	001145	PL	4			
	Bar oil, chainsaw	***	Qt.	4			
	Oil, 2 cycle, chainsaw (50:1) Stihl	***	6 pac	1			
	Fuel container, 5 gallon (With GAS) (No Pre-Mix)	Local	EA	2			
	Fuel container, 5 gallon (With DIESEL) (No Pre-Mix)	Local	EA	3			
118	Mop-up Hose Lay Order (1000')						
	Hose, cotton-synthetic, 1 ½" (100' length)	001239	LG	10			
	Hose, cotton-synthetic, 1" (100' length)	001238	LG	10			
	Hose, garden, synthetic ¾" (50' length)	001016	LG	10			
	Valve, gated wye, 1 ½"	000231	EA	5			
	Valve, gated wye, 1"	000259	EA	5			
	Valve, wye, shut off, ¾"	000272	EA	5			
	Valve, shut off, ¾"	000738	EA	5			
	Nozzle, 1 ½", plastic	000137	EA	4			
	Nozzle, 1", plastic	000138	EA	4			
	Nozzle, garden hose, ¾", brass	000136	EA	4			
	Reducer, 1 ½" to 1"	000010	EA	5			
	Reducer, 1" to ¾"	000733	EA	5			
	Coupling, double female 1 ½"	000857	EA	1			
	Coupling, double female 1"	000710	EA	1			
	Coupling, double male 1 ½"	000856	EA	1			
	Coupling, double male 1"	000916	EA	1			
	Clamp, hose	000046	EA	2			
119	Progressive Hose Lay Order (1000')						
	Hose, cotton-synthetic, 1 ½" (100' length)	001239	LG	10			
	Hose, cotton-synthetic, 1" (100' length)	001238	LG	10			
	Valve, gated wye, 1 ½"	000231	EA	10			
	Reducer, 1 ½" to 1"	000010	EA	10			
	Nozzle, 1", plastic	000138	EA	10			
120	Extended Attack Hose Lay Kit						
	Hose 1 ½"	001239	LG	2000'			
	Valve, 1 ½" Gated Wye	000231	EA	20			
	Reducers 1 ½" – 1"	000010	EA	20			

	Hose 1"	001238	LG	1000'			
	Nozzle 1"	000138	EA	10			
	Reducer, 1" to 3/4"	000733	EA	20			
	Hose, garden, synthetic 3/4" (50' length)	001016	LG	1500'			
	Valve, wye, shut off, 3/4"	00272	EA	15			
	Shut Off Valve 3/4"	000738	EA	15			
	Nozzle 3/4"	000136	EA	15			
	Double Female	000857	EA	1			
121	Camp Kitchen Kit + Propane						
	3 Burner Stove		1				
	Griddle		1				
	4 qt pot		1				
	8 qt pot		1				
	Dutch Oven		1				
	Coffee Pot (percolator)		1				
	Service Utensil kit (all stainless/metal)		1				
	Large Prep Bowl		2				
	Cutting Boards		2				
	Cleaning Supplies kit (dish soap, sponges, Brillo pad)		1				
	Propane		2	15 LBS			
	Hot mitt		1				
	Hand sanitizer		1				

NOTE IC will need to order plates bowls cups plasticware for number of people on incident

After Action Review		
INCIDENT NAME:		IC:
DATE:	Incident Complexity:	
CRITIQUED BY: (Names of attendees)		
What was planned? What actually happened? What was the difference, if any, between questions one and two? What can you do different next time to meet objectives?		
AAR Leader Signature:		Date:
Reviewed by:		Date:
COMMENTS:		

NOTES:



2025 Type 3, 4 & 5 Incident Commander Delegation of Authority and Expectations for all Firefighting Personnel for Central Idaho Dispatch Center



Initial response to any fire should be based on implementation of land management objectives, while applying risk management principles in consultation with the Line Officer and Duty Officer. IC's will understand Line Officer and Fire Management Officer's intent and assure that assigned fire personnel understand this intent. IC's and assigned personnel should continually assess the effectiveness of strategies and tactics and Stop, Think, and Talk about strategies and tactics that are not meeting leader's intent and risk management/safety mitigations.

Our intent is that we are anchored to risk management principles as we make decisions regarding prioritization as well as tactics and strategies employed in fire suppression. The management of wildland fires is an inherently risky endeavor that takes place in an environment ripe with objective hazards. You are required to develop a specific plan of action, communicate that plan to personnel under your command, provide all personnel assigned to an incident under your command with a thorough briefing before they engage the fire, and ensure they understand the objectives and leader's intent. Furthermore, as an IC you are to monitor changing conditions, make necessary adjustments, and mitigate hazards. There may be occasions when it is necessary to implement more specific resource objectives or provide you with additional directions to manage the incident. If this becomes necessary, a revised Delegation of Authority or a leader's intent letter may be issued for your incident.

We as Line Officers put a great deal of faith and trust in the experience of all of you. We feel that the best information regarding assessing hazards and determining appropriate mitigations comes from those closest to the operation. Our role is to lead the discussion in setting priorities among values at risk with Duty Officers and ICs.

Additionally, we expect: All firefighters will work in a professional manner to ensure appropriate representation of our agencies. Foster a learning culture and a work environment free of discrimination, sexual harassment and other forms of inappropriate behavior.

IC's shall ensure personnel on their incident are only assigned to fireline positions for which they are qualified as certified by their employing agency. Ensure trainees have a qualified trainer.

Manage fires within the Frank Church River of No Return and Jim McClure-Jerry Peak Wildernesses in accordance with the land management plan direction which states: Lightning caused fires will be permitted to play, as nearly as possible, their natural ecological role. Suppression actions will be taken where lightning-caused fires pose serious threats to life and/or property within wilderness or to life, property, or natural resources outside of wilderness and person-caused fires using Minimum Impact Suppression Tactics (MIST). Communicate directly with the Zone Duty Officer and the District Ranger/ Agency Administrator to determine the appropriate management options available to you. Motorized equipment or mechanized transportation must be approved by the Forest Supervisor or delegated Agency Administrator prior to use in the Wilderness. In general, the protection of wilderness character will be emphasized, however firefighter and public safety takes priority. You will be responsible for keeping a record of all wilderness intrusions associated with your incident.

If cooperators, including other Federal, State, or local fire suppression forces, join in the initial or extended attack response, include those forces in the incident organization. Establish a unified command, if multi-jurisdictional, to ensure firefighter and public safety. Encourage cooperators to participate in the development of tactics to safely and efficiently meet the objectives of the incident. Establish effective communications with cooperator resources and ensure their proper use of personal protective equipment.

Minimize and mitigate suppression-related impacts to protect natural resources and improvements that occur within the fire area. Closely coordinate with the AA or assigned resource advisor for resource related issues. Report all mis-applications of retardant to the Duty Officer to ensure proper reporting and documentation takes place.

Do not assume any collateral duties as a Type 3 Incident Commander.

A Fire Investigator is needed for all suspected human-caused fires.

IC's are responsible for updating Central Idaho Dispatch Center and the Duty Officer every morning and afternoon on the status of the incident. Immediate notification to Central Idaho Dispatch Center will be made for any significant changes in fire behavior, conditions and all injuries or accidents.

Utilize the Incident Organizer, conduct After Action Reviews (AARs), complete required agency fire reports.

We will commit firefighters only to operations where they have a high probability of success and can operate where exposure to unnecessary risk is minimized to meet reasonable objectives.

Protection of life and the safety of the public and emergency responders is the most important objective for every fire. Before Incident Commanders commit personnel they should ask: What will we do if someone gets hurt? If so, how do we treat and transport them? How long will it take to get them to the hospital.

Heather Degeest
USFS, Salmon-Challis National Forest
Forest Supervisor

Robert G Taylor
BLM, Idaho Falls District
District Manager Acting

SUMMARY OF ACTIONS (ICS 214)

[illegible]

MEDICAL PLAN (ICS 206 WF)

Controlled Unclassified Information//Basic

Medical Incident Report

FOR A NON-EMERGENCY INCIDENT, WORK THROUGH CHAIN OF COMMAND TO REPORT AND TRANSPORT INJURED PERSONNEL AS NECESSARY.

FOR A MEDICAL EMERGENCY: IDENTIFY ON SCENE INCIDENT COMMANDER BY NAME AND POSITION AND ANNOUNCE "MEDICAL EMERGENCY" TO INITIATE RESPONSE FROM IMT COMMUNICATIONS/DISPATCH.

Use the following items to communicate situation to communications/dispatch.

1. CONTACT COMMUNICATIONS / DISPATCH (Verify correct frequency prior to starting report)

Ex: "Communications, Div. Alpha. Stand-by for Emergency Traffic."

2. INCIDENT STATUS: Provide incident summary (including number of patients) and command structure.

Ex: "Communications, I have a Red priority patient, unconscious, struck by a falling tree. Requesting air ambulance to Forest Road 1 at (Lat./Long.) This will be the Trout Meadow Medical, IC is TFLD Jones. EMT Smith is providing medical care."

Severity of Emergency / Transport Priority	<input type="checkbox"/> RED / PRIORITY 1 Life or limb threatening injury or illness. Evacuation need is IMMEDIATE Ex: Unconscious, difficulty breathing, bleeding severely, 2° – 3° burns more than 4 palm sizes, heat stroke, disoriented. <input type="checkbox"/> YELLOW / PRIORITY 2 Serious Injury or illness. Evacuation may be DELAYED if necessary. Ex: Significant trauma, unable to walk, 2° – 3° burns not more than 1-3 palm sizes. <input type="checkbox"/> GREEN / PRIORITY 3 Minor Injury or illness. Non-Emergency transport Ex: Sprains, strains, minor heat-related illness.	
Nature of Injury or Illness & Mechanism of Injury		Brief Summary of Injury or Illness (Ex: Unconscious, Struck by Falling Tree)
Transport Request		Air Ambulance / Short Haul/Hoist Ground Ambulance / Other
Patient Location		Descriptive Location & Lat. / Long. (WGS84)
Incident Name		Geographic Name + "Medical" (Ex: Trout Meadow Medical)
On-Scene Incident Commander		Name of on-scene IC of Incident within an Incident (Ex: TFLD Jones)
Patient Care		Name of Care Provider (Ex: EMT Smith)

3. INITIAL PATIENT ASSESSMENT: Complete this section for each patient as applicable (start with the most severe patient)

Patient Assessment: See IRPG page 106

Treatment:

4. TRANSPORT PLAN:

Evacuation Location (if different): (Descriptive Location (drop point, intersection, etc.) or Lat. / Long.) Patient's ETA to Evacuation Location:

Helispot / Extraction Site Size and Hazards:

5. ADDITIONAL RESOURCES / EQUIPMENT NEEDS:

Example: Paramedic/EMT, Crews, Immobilization Devices, AED, Oxygen, Trauma Bag, IV/Fluid(s), Splints, Rope rescue, Wheeled litter, HAZMAT, Extrication

6. COMMUNICATIONS: Identify State Air/Ground EMS Frequencies and Hospital Contacts as applicable

Function	Channel Name/Number	Receive (RX)	Tone/NAC *	Transmit (TX)	Tone/NAC *
COMMAND					
AIR-TO-GRND					
TACTICAL					

7. CONTINGENCY: Considerations: If primary options fail, what actions can be implemented in conjunction with primary evacuation method? Be thinking ahead.

8. ADDITIONAL INFORMATION: Updates/Changes, etc.

REMEMBER: Confirm ETA's of resources ordered. Act according to your level of training. Be Alert. Keep Calm. Think Clearly. Act Decisively.